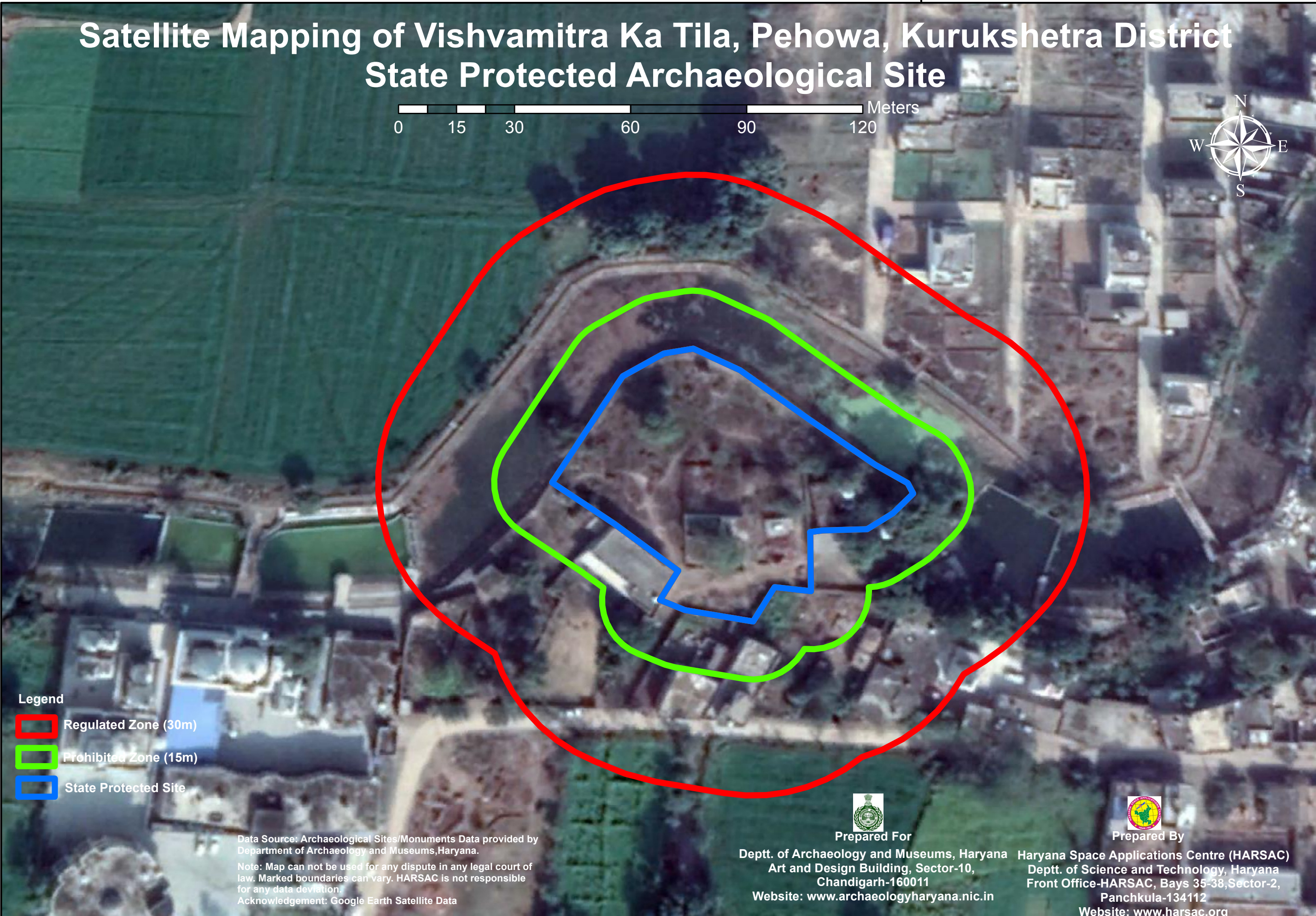


76°34'30"E

# Satellite Mapping of Vishvamitra Ka Tila, Pehowa, Kurukshetra District State Protected Archaeological Site



### Legend

-  Regulated Zone (30m)
-  Prohibited Zone (15m)
-  State Protected Site

Data Source: Archaeological Sites/Monuments Data provided by Department of Archaeology and Museums, Haryana.

Note: Map can not be used for any dispute in any legal court of law. Marked boundaries can vary. HARSAC is not responsible for any data deviation.

Acknowledgement: Google Earth Satellite Data



Prepared For

Deptt. of Archaeology and Museums, Haryana  
Art and Design Building, Sector-10,  
Chandigarh-160011  
Website: [www.archaeologyharyana.nic.in](http://www.archaeologyharyana.nic.in)



Prepared By

Haryana Space Applications Centre (HARSAC)  
Deptt. of Science and Technology, Haryana  
Front Office-HARSAC, Bays 35-38, Sector-2,  
Panchkula-134112  
Website: [www.harsac.org](http://www.harsac.org)

76°34'30"E